

# ATTENTION PROPENSION

A CURSE TOO CRUEL TO CAST.



Because  
**GREMLINS**  
can't  
**ABIDE**



being  
**EYED**

**GREM-LENS**

is **EVER** the **CENTER,**



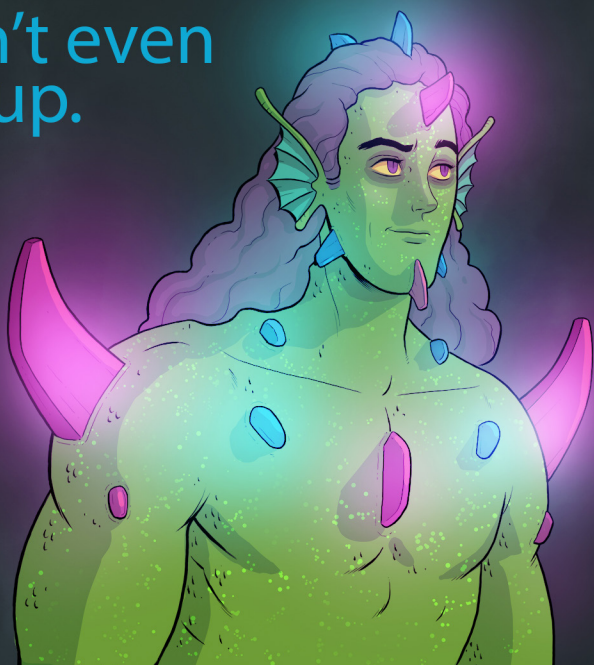
and **NEVER**  
**MISSED.**



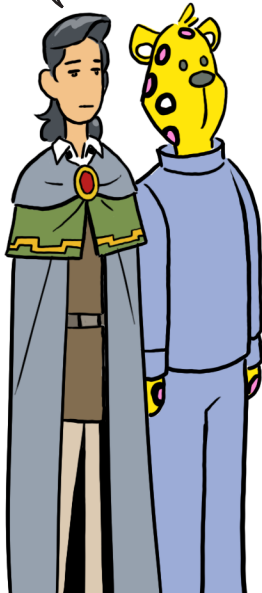
And the spell has a sense of humor.



He can't even cover up.



THE BOTTOMS ARE ONLY ALLOWED BECAUSE, FRANKLY--



--THEY OUTDO THE CURSE!

END

